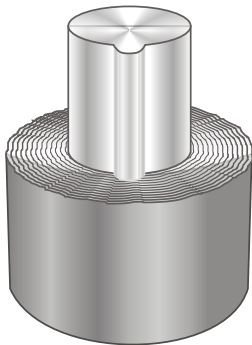


GLOSVAX Cotton / Paper Bowls

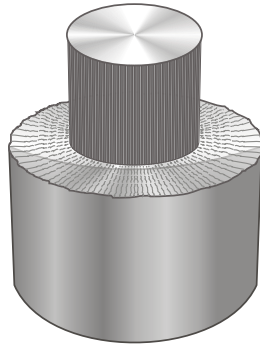
With an experience of over 2 decades in industries like Magnetic Tapes, Paper, Textile, Jute, CR Mills, Car Companies & Viscose manufacturing we realized that many companies essentially need tailor made rolls for specific results & equipments giving birth to our GLOSVAX Rolls.

Although most applications can be handled from experience there are situations where it is worth while to study the process, product & the equipment to offer bowls with a specific objective for

- Gloss
- Bulk
- Embroidery
- Smoothness
- Heat Setting
- Chintz Effect
- Waxy Feel
- Seam Marks
- Lumpiness



Conventional Cotton



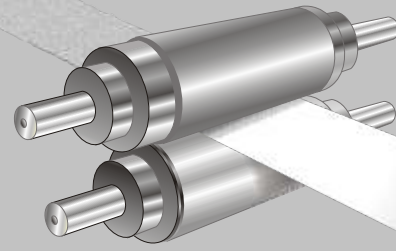
Radial / Glosvax Cotton

Principle : The processing of GLOSVAX Bowls start with tailor made felt after evaluating operating parameters like Linear Pressure / Speeds / Configuration of Stack & Ambient conditions etc.

The caking (pre-pressing) itself is done in a humidity controlled SETWET environment which has a important role in final conditioning of the roller to enhance useful life besides performance.

Raw Material : Cotton based rolls essentially are based on long staple 100% cotton yarn along with a blend of wool besides comber in varying degrees where as paper rolls are based on Denim with varying contents of wool, linen & mineral fibers for diverse needs & applications.

Calendering Embossing Schreiner

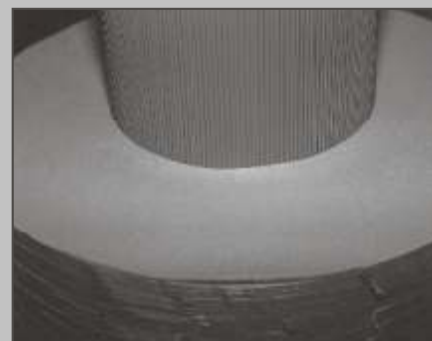


Tailor made Glosvax Sheet



SETWET Cotton Caking

GROOVED SHAFTS



Wool / Flax / Composite Paper Bowls

Features	Paper Rolls	Plastic Sleeve	Glosvax (Cotton)
Composition	Cotton / Wool / Linen	Polyamide Base	Cotton + Wool
Process	Die Cutting / Pressing	Casted / Extruded	Carding / Caking
Assembly	Fast Pressing	Heat Shrink / Free Fit	Slow Pressing
Finishing	Turning / Grinding	Grinding / Polishing	Turning / Polishing
Hardness	80-92 shore D	88-92 shore D	72-82 shore D
Mark Resistant	Moderate / Low	Excellent	Excellent / Moderate
Main Applns.	Calendering/ Deep Emboss	Cldng. / One Side Emb.	All types
Cut Depth	Low Depth	Negligible	Deep Cut
Grinding Freq.	Very High	Very Low	Moderate / Low
Costing	Moderate	Expensive	Economical

Essentiality of Cotton & Paper Bowl Conditioning & Cambering

Conditioning of fiber rolls is the final stage of manufacturing & all bowls are only 90% finished when sent by us & balance 10% completion is essentially done on the calender machine itself & this can be compared with a premature new born baby placed in a incubator for strength to survive the world.

Alternately it can also be very well compared to freshly laid RCC (concrete) where in use of vibrators & continuous curing with water will determine the strength & life of the building without which no strong structure is possible.

Extreme care has to be taken for conditioning every fiber roller of any make to give it toughness & elasticity to prolong its useful life while offering worth while performance. Detailed procedure may be down loaded from our website or followed from the guarantee card with each supply of roller.

Cambering : Where bowls are to be run unsupported at extreme ends of any Calender Stack Cambering is a distinct possibility & detailed procedure has to be followed with each grinding for getting perfect results. Unsupported rolls must be ordered with oversize shaft dia to minimize bending or cambering requirements.



WORLD'S FIRST & ENZYME BASED

TECHAIDS **NXG**
An ISO 9000 Company

D 121-122, PHASE VII, INDUSTRIAL AREA, MOHALI CHANDIGARH 160 055 - INDIA
PBX: +91 172 5097292 - 94, GSM : +91 9814 007 633 FX: +91 172 5092229 @: gloss@sify.com / info@techaid.in

www.techaid.in